

USER MANUAL

**Label Rewinder for
Primera label printers**


THIS PRODUCT IS CERTIFIED:



APPLICATION

The rewinder is used to rewind the labels on roll having fixed 3" internal diameter. The maximum external roll diameter allowed is up to 250 mm (10") while the maximum label width is up to 220 mm (8.66").

POWER SUPPLY

An external power supply 100/240VAC - 2.5A at 24V  allows an electronic circuit to provide, through the tension arm, the speed and sense of rotation auto adjustment.

FUNCTIONING

The printer must be put onto the rewinder's printer plate, in this way the correct rewinding operations are guaranteed and also the device is fastened to the printer.

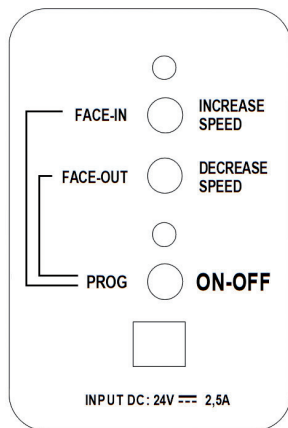
The rewinder has two types of speed adjustments, through the two buttons it is possible to set the maximum speed required while the tension arm will auto adjust the speed from zero to the set value and the sense of rotation.

WORKING CONDITIONS

- When the printer forwards the media for printing, the tension arm goes down, the device rewinds the media. *Yellow or green led on depending on the selected rewinding mode (face-in or face-out).*
- When the tension arm is in the middle position, the device is idle. *Both yellow and green leds on.*
- When the printer backwards the media, the tension arm goes up, the device unwinds it. *Yellow or green led on depending on the selected rewinding mode (face-in or face-out).*

When the unit is operating but the media is not loaded or it runs out, the tension arm reaches the lowest position and after few seconds the unit will stop by itself, both leds blink and it beeps.

CONTROL PANEL



ON-OFF

Push this button to turn On or Off the unit.

INCREASE SPEED

Push this button to increase the rotation speed.

DECREASE SPEED

Push this button to decrease the rotation speed.

LABEL FACE-OUT

Turn the unit off. Keep pushed "FACE OUT" button, push and release "ON-OFF" button while the green led turns on and off. The unit is now ready to operate.

LABEL FACE-IN

Turn the unit off. Keep pushed "FACE IN" button, push and release "ON-OFF" button while the yellow led turns on and off. The unit is now ready to operate.

INSTALLATION



STEP 1

Unscrew the two knobs from the rewinder's base.



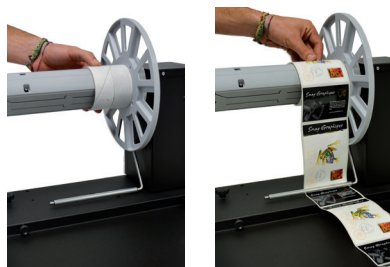
STEP 2

Set the included printer plate beside the rewinder's base.



STEP 3

Use the two knobs to fasten the printer plate to the rewinder's base.



STEP 4

Load the empty cardboard core, let pass the printed media underneath the tension arm and stick it on the core.



STEP 5

Insert the outer disc onto the core and screw the knob.



STEP 6

Install the support and fasten it to the base through the knob.

