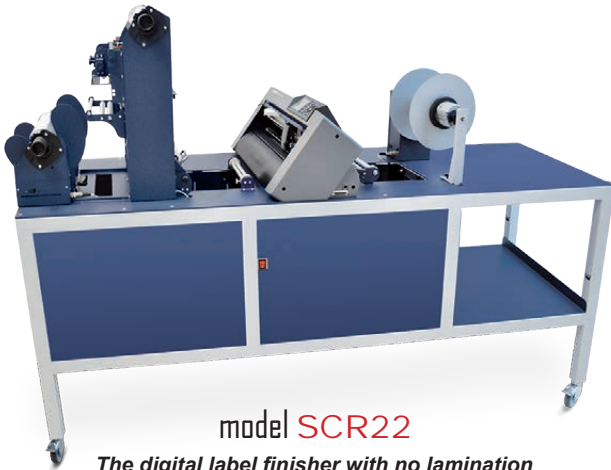


# SMART SOLUTIONS FOR THE LABELING INDUSTRY

## SCORPIO SERIES - DIGITAL LABEL FINISHING SYSTEMS



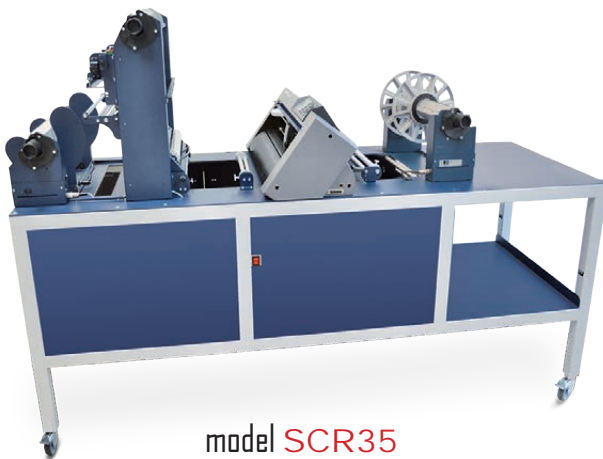
model **SCR22**

*The digital label finisher with no lamination module ideal for those who use pigment-based ink / laser technology printers (water and fade resistant).*



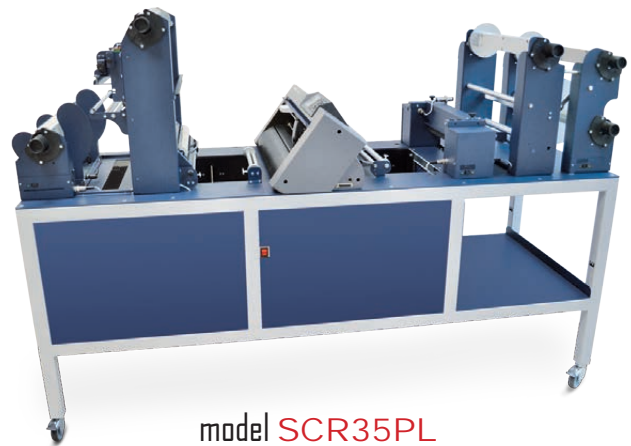
model **SCR22PL**

*The ideal companion to 8.5" digital color label printers*



model **SCR35**

*The finisher for wide-format, with no lamination*



model **SCR35PL**

*The perfect match for wide-format digital color label presses*

## Full flexibility, limitless variations in label design and smooth workflow.

*The Scorpio Series are digital label finishers truly meant to meet the on-demand short run label finishing solution for use with digital color label printers and presses.*

The Scorpio Series are all-in-one systems that unwind, laminate with laminate liner rewind core holder for labels added durability (only SCR22PL and SCR35PL), digitally die-cut, remove the excess label material around each die-cut shape, slit, and rewind offering you everything to professionally cut and finish labels.

All systems provide a very accurate label finishing solution using cutting plotter technology.

This allows you to cut different types of material and shapes on the fly without the added cost of dies.

The units are equipped with a cutter management tool that works together with a camera forming an integrated optical black-mark registration system providing cutting speed optimization and avoiding synchronization issues.

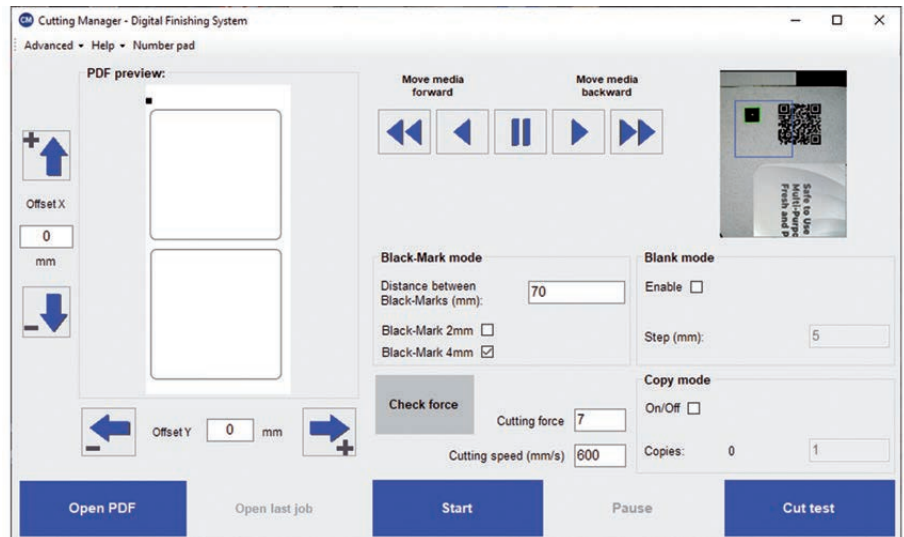
## SCORPIO CUTTING MANAGER

Scorpio software works together with a camera forming an integrated optical black-mark registration system.

With this software, the operator can import the cutting files created on Adobe Illustrator, Inkscape or Corel Draw which is also used to create the black marker.

The Scorpio is equipped with a camera used to detect the black-mark printed on the media. This camera assist the software in detecting the black-mark created inside the cutting file.

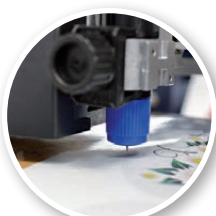
This process tells the plotter when and where to start cutting the media.



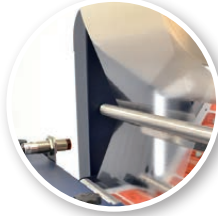
*Cutting manager tool.*



*Camera*



*Knife cutting*



*Laminating  
(SCR22PL and SCR35PL only)*



*Core holder's clutch*



*Tension arm*



*Adjustable clutch*



*Waste matrix removal*



*Slitting*



*Shelf*

## SOME BENEFITS OF USING THE SCORPIO SERIES:

- » Short run label production in-house means reducing inventory requirements and costs
- » Producing full bleed labels will no longer be a nightmare
- » Laminating for labels added durability (no need for special media)
- » No need to order pre-die cut label rolls
- » No need for ultra-precise label margin adjustment when printing in full bleed
- » No need to set up a minimum gap between labels when printing in full bleed (saving on media).



# SMART SOLUTIONS FOR THE LABELING INDUSTRY

## SCORPIO SERIES - DIGITAL LABEL FINISHING SYSTEMS



### WHAT SCORPIO SERIES HAVE AND THE COMPETITION DOESN'T...

Optical Sensing	Scorpio series use a camera forming an integrated optical black-mark registration system allowing to read one black-mark for each cutting layout. Optimizing cutting speed. No synchronization issues.
Adjustable Clutch	This feature allows to obtain flat tight finished rolls and waste material neatly rewound.
Size Does Matter	Scorpio series size help operators have more room to easily and quickly load the media and get the machine ready to work in a few minutes.
Media Track	Scorpio series are equipped with an ultrasonic sensor system that generates a loop of media both in plotter input and output in order to guarantee a smooth media track during the cutting operations.
Slitter Blades	Scorpio series are equipped with inexpensive multi edge blades. Blade life extended 4 times as much.
Blank Labels	Scorpio series can cut blank labels. Through the Scorpio software, operators only need to set label step. No printed black-mark required on the media.
Software	Software can be installed on any computer running Windows 8.1 or later. Not supported by macOS systems
Media	D.P.R. Scorpio series allow to use any media from 4" (101,6 mm) up to 13.77" (350mm) wide.
Matrix Rewinding	Scorpio series feature synchronized motorized core holders that avoid any matrix tear while removing and rewinding.
Easy To Move	Scorpio series are equipped with four wheels that allow to easily move the machine.
Remote Assistance	Customers whose computers are connected to internet can be reached by one of our operators for remote assistance and firmware upgrades.



Pressing roller

## ACCESSORIES INCLUDED

Our digital finishing systems equipped with a removable drawer (only SCR22PL and SCR35PL) and a roller positioned above the core holder to help rewind the compressed waste.

This design makes the unit more practical and helps it avoid the most common the issues of rewinding.

All devices have also the o-rings on the matrix remover roller, used to facilitate the removal of your matrix from the labels.



Removable drawer



O-rings

# SMART SOLUTIONS FOR THE LABELING INDUSTRY

## SCORPIO SERIES - DIGITAL LABEL FINISHING SYSTEMS



### SPECIFICATIONS

Part number	SCR22	SCR22PL	SCR35	SCR35PL
Input / Output max. roll diameter	9.84" (250 mm)	9.84" (250 mm)	9.84" (250 mm)	9.84" (250 mm)
Minimum media width	4.34" (110mm)	4.34" (110mm)	4.34" (110mm)	4.34" (110mm)
Maximum media width	8.86" (225 mm)	8.86" (225 mm)	13.77" (350mm)	13.77" (350mm)
Maximum cutting width	7.87" (200 mm)	7.87" (200 mm)	13" (330 mm)	13" (330 mm)
Minimum slitting width	0.75" (19 mm)	0.75" (19 mm)	0.75" (19 mm)	0.75" (19 mm)
Number of slitting blades	up to 8	up to 8	up to 12	up to 12
Lamination module	NO	YES	NO	YES
Dimensions	L = 59.05" (150 cm) H = 57.06" (145 cm) W = 27.56" (70 cm)	L = 78.74" (200 cm) H = 57.06" (145 cm) W = 27.56" (70 cm)	L = 59.05" (150 cm) H = 57.06" (145 cm) W = 27.56" (70 cm)	L = 78.74" (200 cm) H = 57.06" (145 cm) W = 27.56" (70 cm)
Weight (estimated)	180 kg (396 lb)	235 kg (518 lb)	200 kg (441 lb)	245 kg (540 lb)
Roll core size	76 mm (3")			
Minimum / Maximum label length	0.39" (10 mm) / 17.71" (450 mm)			
Maximum media thickness	10 mil (0.25 mm)			
Maximum cut speed	24 in/s (600 mm/s) in all directions			
Cut precision	0.012" (0.3 mm)			
Warranty	One year parts and labor. Usage limitation may apply			

### PLOTTER SPECIFICATIONS

Data interface	USB 2.0
Linear cut speed	Dependent on graphic 2 squares across 3.15"x3.15" (80x80 mm) = 34 labels per min.
Programmable Cutting Force	20 gf - 300 gf in 31 steps (Max 300 gf)
Test cut function	Yes
Cut to registration	Single point registration black-mark (0.16" (4 mm) or 0.08" (2mm) square)
Cut ability	Both printed and unprinted media
Interface & Software	Software can be installed on any computer running Windows 8.1 or later. Not supported by macOS systems
Power requirements	100-240 VAC, 240 watts